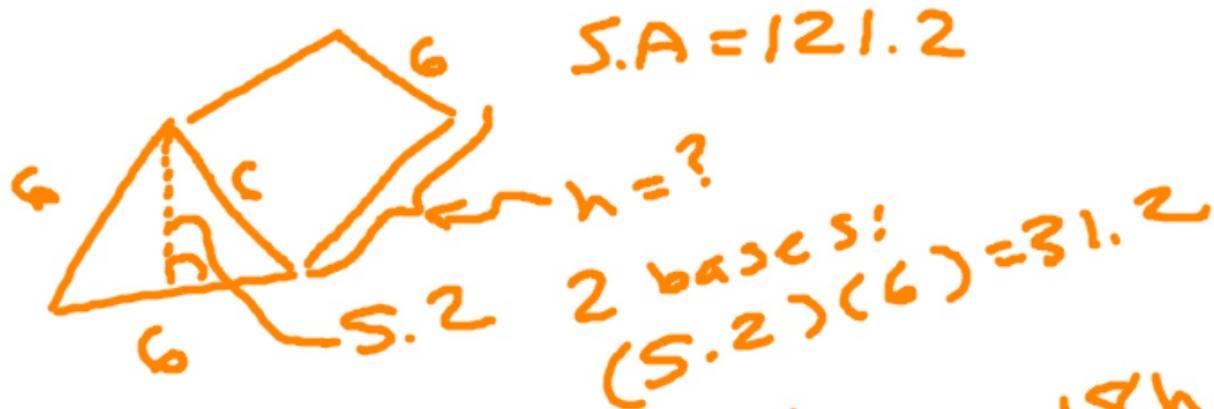


9. A special box designed to hold an antique artifact is shaped like a triangular prism. The surface area of the box is 121.2 square inches. The height of the base triangle is 5.2 inches and each side of the base triangle is 6 inches long. What is the height of box? (3 points)



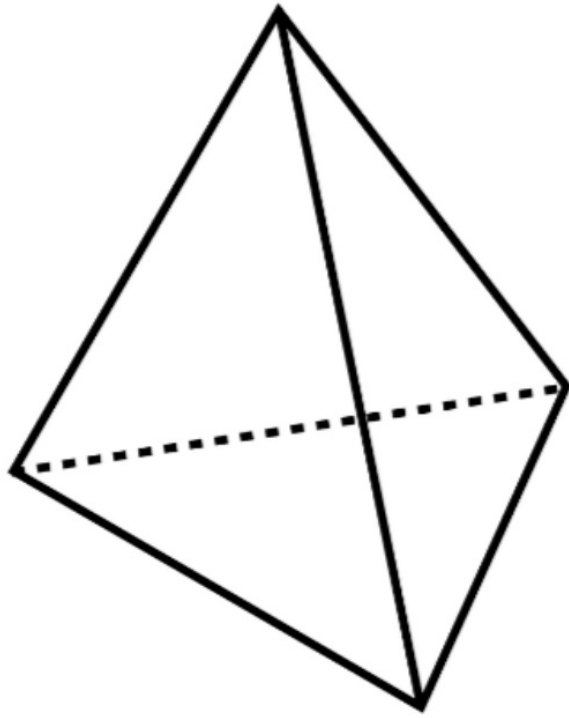
$$121.2 = 31.2 + 18h$$

$$90 = 18h$$

$$h = 5$$

$$3 \text{ sides: } 3(6h) = \frac{+18h}{121.2}$$

$$2 \text{ bases: } (5.2)(6) = 31.2$$



Add Decimals Find each sum.

1. $6.20 + 31.59 + 11.11 + 19.85 =$

68.75

2. $22.69 + 15.45 + 9.87 + 26.79 =$

74.8

show
your
work.

3. Sonya went to the baseball game. She paid \$10.50 for admission. She bought a drink for \$2.75, a bag of popcorn for \$4.60, and a hot dog for \$3.75. How much did she spend in total?

\$21.60

Divide Decimals Find each quotient.

4. $79.2 \div 6 =$

13.2

5. $72.60 \div 3 =$

24.20

6. $240.5 \div 13 =$

18.5

7. The Chen family drove 345.6 miles on their vacation. They drove the same amount each of the 3 days. How many miles did they drive each day?

115.2 miles

