

5

$$r = \frac{30}{2} = 15 \text{ m}$$

$$l = 36 \text{ m}$$

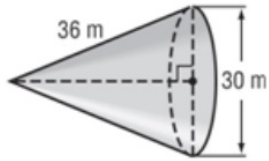
"Total surface area"

$$S.A. =$$

$$\pi r l + \pi r^2$$

Lateral Area base Area

5.



$$\begin{aligned} S.A. &= (3.14)(15)(36) + (3.14)(15)^2 \\ &= 1695.6 + 706.5 \\ &= 2402.1 \text{ m}^2 \end{aligned}$$

"Total surface area"

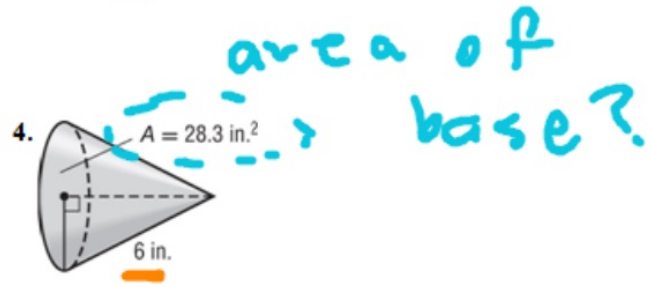
$$S.A. =$$

$$\pi r l + \pi r^2$$

Lateral Area
base

CcDc	AaBbCc	AaBbCc	AaB	AaBbCc.	AaBbCcDc	Ac
aci...	Heading 1	Heading 2	Title	Subtitle	Subtle Em...	Er
Styles						

15 ft



$$\pi r^2 = 28.3$$

$$r^2 \approx 9$$

$$r = 3$$

28.3 ÷ 3.14 = 9.012739
9.012739

$$\pi r l + \pi r^2$$

$$(3.14 \times 3 \times 6) + 28.3$$

$$= 84.8 \text{ in.}^2$$