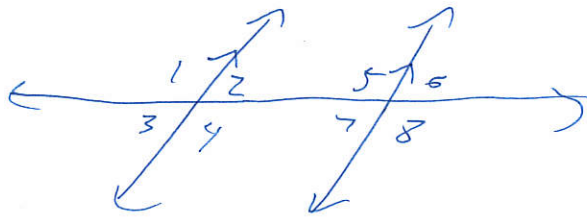


## Practice Quiz

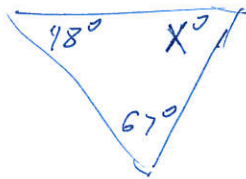
For Exercises 1-5, use the figure below.



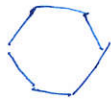
- ① Classify  $\angle 6$  and  $\angle 7$ .
- ② Find  $m\angle 3$  if  $m\angle 4 = 68^\circ$ .
- ③ Find  $m\angle 2$  if  $m\angle 6 = 38^\circ$ .
- ④  $\angle C$  and  $\angle D$  are alternate interior angles formed by two parallel lines cut by a transversal. Find  $m\angle D$  if  $m\angle C = 47^\circ$ .
- ⑤  $\angle 1$  and  $\angle 2$  are corresponding and supplementary angles formed by two parallel lines cut by a transversal. Find  $m\angle 1$ .

⑥ Find the third angle of a right Triangle if the measure of one angle is  $46^\circ$ .

⑦ Find the value of  $x$  in the triangle



⑧ Find the measure of an exterior angle of the regular polygon shown below.



⑨ The measure of the exterior angle of a regular polygon is 36 degrees. How many sides does the polygon have?

⑩ Refer to #6. Prove how you know the measure of third angle.