

The grocery store sells cantaloupes for \$4.50 per pound.

10. Write a function to represent the situation.

$$f(x) = 4.50x$$

$x = \#$ of pounds
 $y = \text{total cost}$

$$f(x) = 4.50x$$

continuous,
 we can have
 a part of a
 pound.

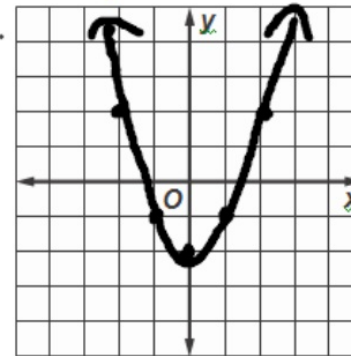
11. Is the function continuous or discrete? Explain.

11.

12. Graph $y = x^2 - 2$.

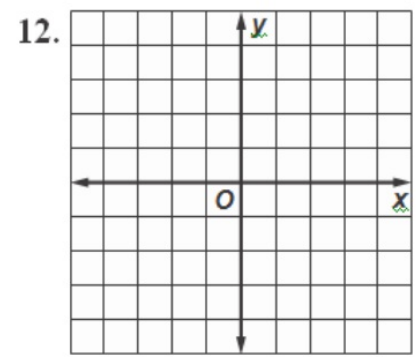
x	$x^2 - 2$	y	
-2	$(-2)^2 - 2$	2	$(-2, 2)$
-1	$(-1)^2 - 2$	-1	$(-1, -1)$
0	$(0)^2 - 2$	-2	$(0, -2)$
1	$(1)^2 - 2$	-1	$(1, -1)$
2	$(2)^2 - 2$	2	$(2, 2)$

12.

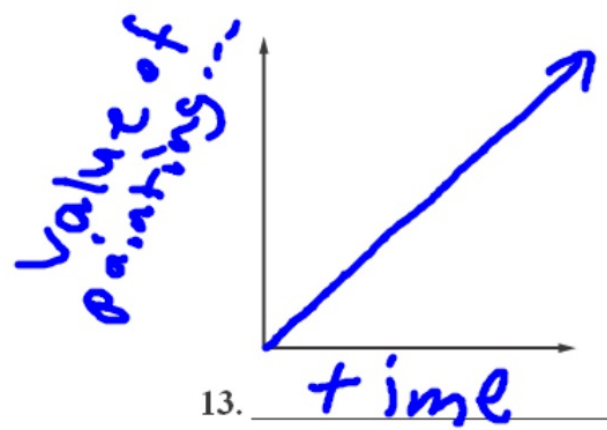


12. Graph $y = x^2 - 2$.

straight line.
↙



13. The value of a painting has increased steadily over time.
Sketch a qualitative graph to represent this situation.



00