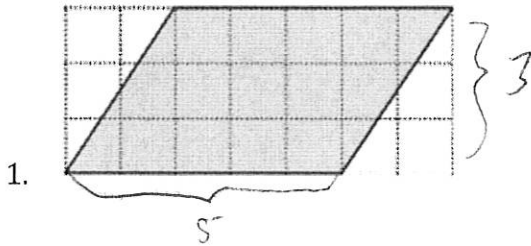


Chapter 9 Practice Quiz

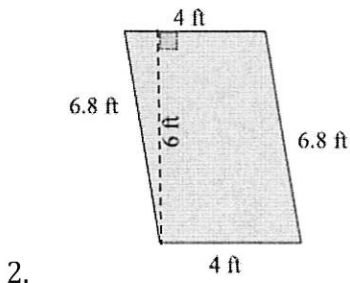
Find the area of each figure



$$A = bh$$

$$A = (3)(5)$$

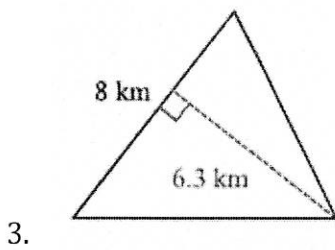
$$A = 15 \text{ units}^2$$



$$A = bh$$

$$A = (6)(4)$$

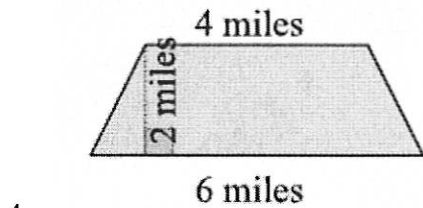
$$A = 24 \text{ ft}^2$$



$$A = \frac{1}{2}bh$$

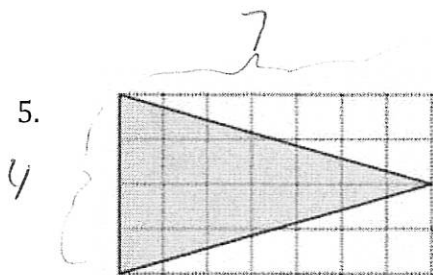
$$A = \frac{1}{2}(8)(6.3)$$

$$A = (4)(6.3)$$



$$A = \frac{1}{2}(4+6)(2) = 10$$

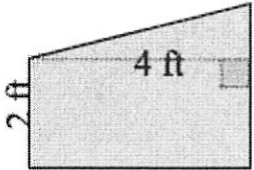
$$= 10 \text{ miles}^2$$



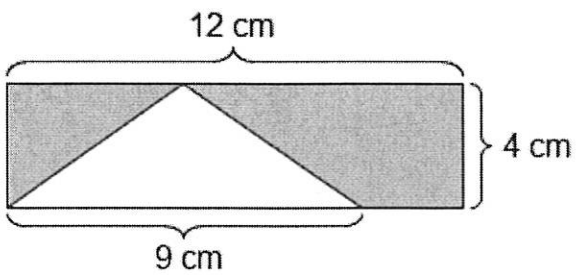
$$A = \frac{1}{2}(4)(7)$$

$$A = (2)(7)$$

$$A = 14 \text{ units}^2$$

6.   $\frac{1}{2}(4)(2+3)$   
 $= 2(5)$   
 $= 10 \text{ ft}^2$

7. Find the area of the shaded region

  $\text{shaded: } 12 \times 4 = 48$   
 $\text{triangle: } \frac{1}{2}(9)(4) = 18$   
 $30 \text{ cm}^2$

8. Find the missing dimension of a triangle: height: 14 ft and area: 252 ft<sup>2</sup>

$$252 = \frac{1}{2}(b)(14)$$

$$252 = 7b \quad b = 36 \text{ ft}$$

9. Find the base of a parallelogram with height  $5\frac{3}{4}$  feet and area  $25\frac{1}{4}$  square feet.

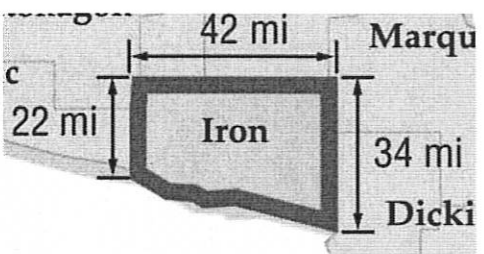
$$25\frac{1}{4} = (5\frac{3}{4})b$$

$$\frac{7}{38} \cdot \frac{101}{4} = \frac{38}{7}b$$

$$b = \frac{707}{152} = 4.65$$

OR  $\frac{25.25}{5.43} = 4.65$

10. The shape of Iron County, Michigan roughly trapezoidal, shown below. What is the approximate area of Iron County? (hint: 22 mi. and 34 mi. are bases)

  $\frac{1}{2}(22+34)(42)$   
 $\frac{1}{2}(56)(42)$   
 $\frac{1}{2}(56)(21)$   
 $= 1176 \text{ mi}^2$