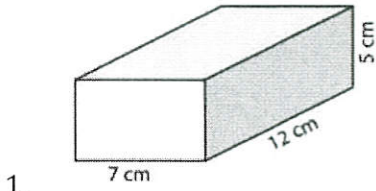
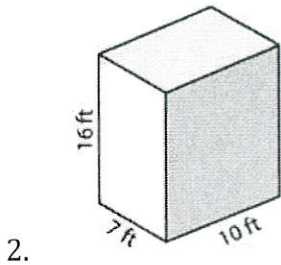


### Chapter 10 Practice Quiz 1

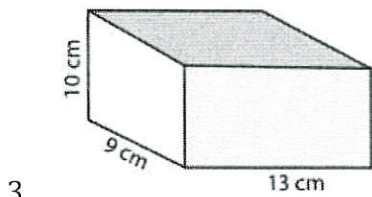
Find the volume of each prism



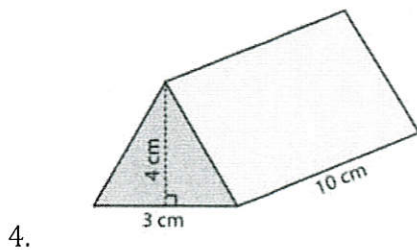
$$\begin{aligned} V &= (7)(12)(5) \\ &= (7)(60) \\ &= 420 \text{ cm}^3 \end{aligned}$$



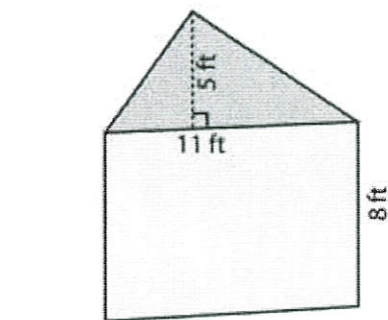
$$\begin{aligned} V &= (16)(7)(10) \\ &= (160)(7) \\ &= 1120 \text{ ft}^3 \end{aligned}$$



$$\begin{aligned} V &= (10)(9)(13) \\ &= (90)(13) \\ &= 1170 \text{ cm}^3 \end{aligned}$$

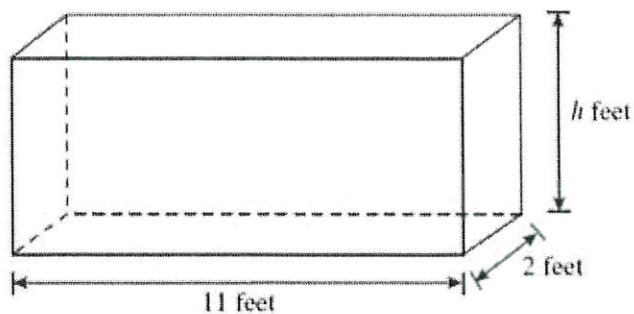


$$\begin{aligned} V &= \frac{1}{2}(3)(4)(10) \\ &= (3)(2)(10) \\ &= 60 \text{ cm}^3 \end{aligned}$$



$$\begin{aligned} V &= \frac{1}{2}(11)(5)(8) \\ &= (55)(4) \\ &= 220 \text{ ft}^3 \end{aligned}$$

5.



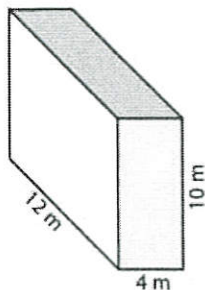
$$154 = (11)(2)(h)$$

$$154 = 22h$$

$$\frac{154}{22} = \textcircled{7 = h}$$

6. The total volume of the interior of the case is 154 cubic feet. What is the value of  $h$ ?

Find the surface area of each prism



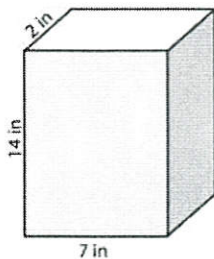
$$2(12 \times 10) = 2(120) = 240$$

$$2(4 \times 10) = 2(40) = 80$$

$$2(12 \times 4) = 2(48) = 96$$

$\textcircled{416 \text{ m}^2}$

7.



$$2(2 \times 9) = 2(18) = 36$$

$$2(7 \times 14) = 2(98) = 196$$

$$2(14 \times 2) = 2(28) = 56$$

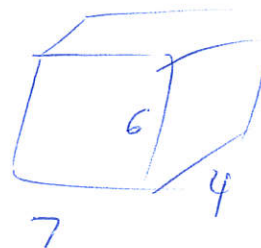
$\textcircled{280 \text{ in}^2}$

8.

9. For a rectangular prism that is 7 feet by 6 feet by 4 feet

a. Find the volume

$$7 \times 6 \times 4 = \textcircled{168 \text{ ft}^3}$$



b. Find the surface area

$$2(7 \times 6) = 2(42) = 84$$

$$2(7 \times 4) = 2(28) = 56$$

$$2(6 \times 4) = 2(24) = 48$$

$$\textcircled{168 \text{ ft}^2}$$